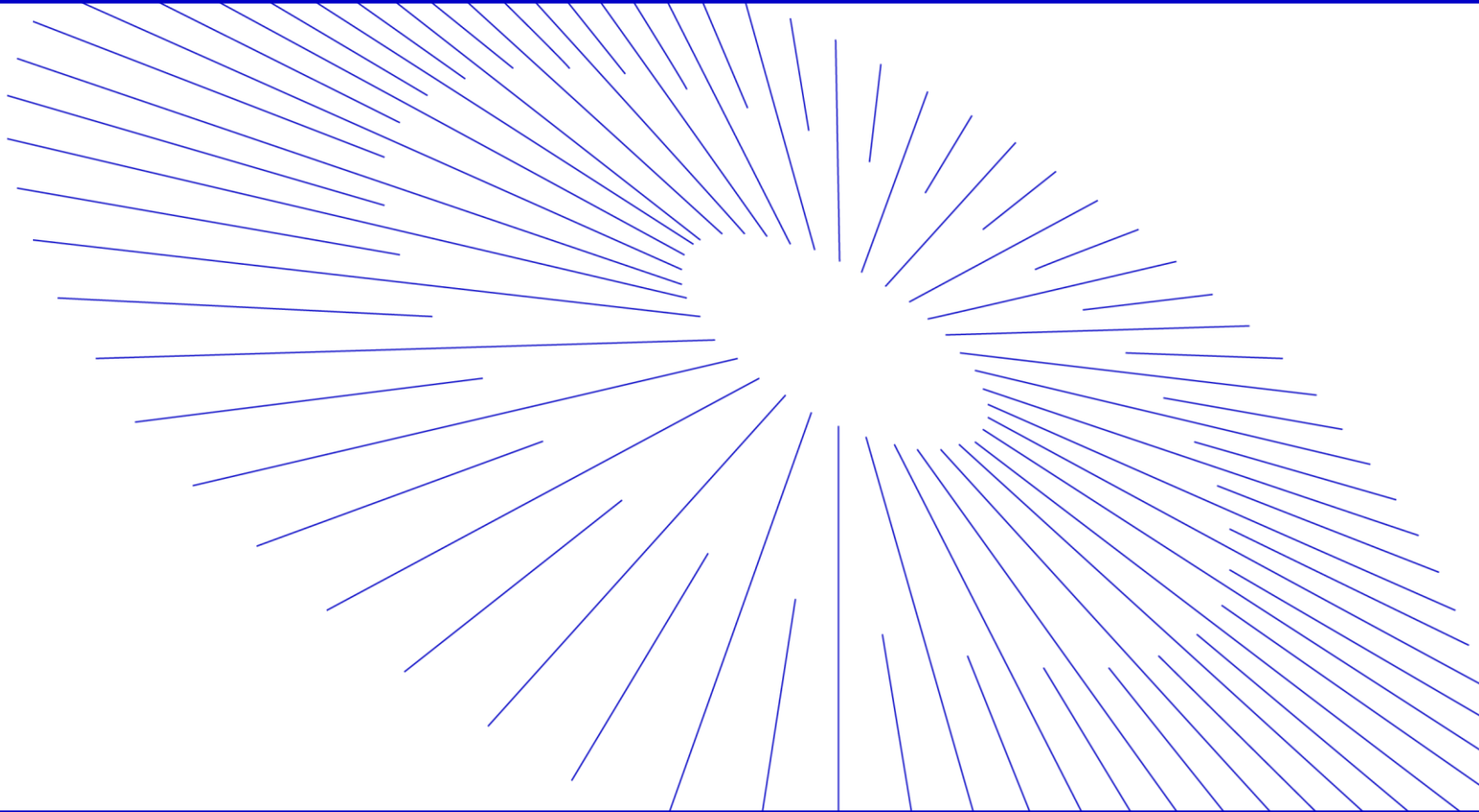


Smart Construction Groupware 2025.5.27 (planned) release version



EARTHBRAIN

- The Smart Construction Groupware update will be released on the following dates and with the following contents.

Release schedule: Tuesday , May 27th (Japan time) (scheduled) 19:00 to 24:00
(The app will be temporarily unavailable during the release process.)

No.	function	overview	detail
1	Folder/File List	This is a functional improvement. You can now upload and download files up to	As shown on the left.
2	Folder/File List	The function is deleted. The notes field in the Details tab has been removed.	As shown on the left.
3	Folder/File List	The function is deleted. Removed the creator column from the table.	As shown on the left.
4	Site list	This is a functional improvement. Performance has been improved as it took a long time to display the site list in some cases. * Display was slow when there were many sites to which licenses were applied.	As shown on the left.
5	Group list	This is a functional improvement. You can now delete groups. * Only SuperAdmin has authority for both company and group affiliation .	As shown on the left.

- The Smart Construction Groupware update will be released on the following dates and with the following contents.

Release schedule: Tuesday , May 27th (Japan time) (scheduled) 19:00 to 24:00
(The app will be temporarily unavailable during the release process.)

No.	function	overview	detail
6	Viewer	New features have been added. You can now view files from	Please refer to the explanation on the next page.
7	Viewer	This is a functional improvement. Because displaying large CSV or TXT files in the viewer can cause instability, we have imposed a	As shown on the left.
8	Viewer	New features have been added. Wav and mp3 files can now be displayed in the viewer.	As shown on the left.

- The Smart Construction Groupware update will be released on the following dates and with the following contents.

Release schedule: Tuesday , May 27th (Japan time) (scheduled) 19:00 to 24:00
(The app will be temporarily unavailable during the release process.)

No.	function	overview	detail
9	Improved mouse operation	This is a functional improvement. We have improved the usability of mouse operations when using	Please refer to the explanation on the next page.
10	Member Related	This is a functional improvement. Member-related features have been improved.	Please refer to the explanation on the next page.
11	others	Functionality improvements and bug fixes. <ul style="list-style-type: none">Pressing the log in the global header now takes you to the home screen.The breadcrumb notation was displayed twice, so it has been fixed.The wording when adding members has been unified. (Unified "Add" / "Invite" to "Add")	As shown on the left.

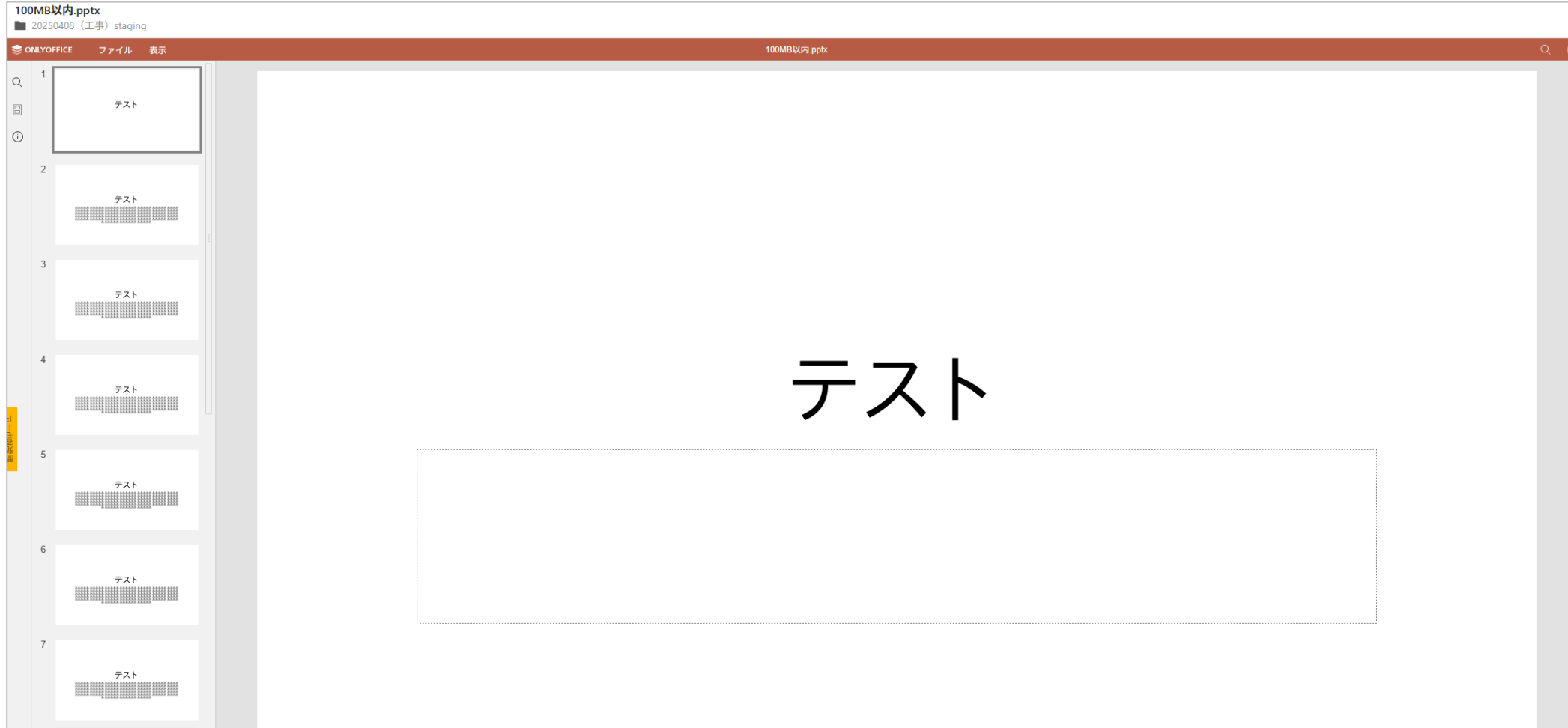
- The Smart Construction Groupware update will be released on the following dates and with the following contents.

Release schedule: Tuesday , May 27th (Japan time) (scheduled) 19:00 to 24:00
(The app will be temporarily unavailable during the release process.)

No.	function	overview	detail
12	Groupware Viewer	New features have been added. It is now possible to reference point clouds in LAZ format.	refer to the explanation on the next page .
13	Groupware Viewer	This is a functional improvement. LAS file from an unsupported version (other than Version 1.2) was loaded. An error message is now displayed.	refer to the explanation on the next page .
14	measurement	This is a functional fix. The measurement UI has been changed.	refer to the explanation on the next page .

No6

- You can now view files from



No9

- Improved mouse operation.

Example: Folder and file list (list display)

20250527 (工事) dev

メンバー(2) 37

ファイル 掲示板 カレンダー 発議書類 電子納品

× 2件を選択中です

ファイルおよびフォルダを検索

名前	最終更新	最終更新者	サイズ
<input checked="" type="checkbox"/> M0001_02.JPG	2025/05/15	filemanager_v2_test SuperAdmin001	10.5MB
<input checked="" type="checkbox"/> M0001_03.JPG	2025/05/15	filemanager_v2_test SuperAdmin001	10.5MB
<input type="checkbox"/> M0004_01.PDF	2025/05/15	filemanager_v2_test SuperAdmin001	135.2KB
<input type="checkbox"/> M0004_02.JPG	2025/05/15	filemanager_v2_test SuperAdmin001	10.5MB
<input type="checkbox"/> M0004_03.JPG	2025/05/15	filemanager_v2_test SuperAdmin001	10.5MB
<input type="checkbox"/> testfile1	2025/05/15	filemanager_v2_test SuperAdmin001	2.4GB
<input type="checkbox"/> 工事書類	2025/05/13	filemanager_v2_test SuperAdmin001	-
<input type="checkbox"/> Groupware	2025/05/13	filemanager_v2_test SuperAdmin001	-

1-12件表示 (全12件) < 1 >

- Multiple selection possible using checkboxes
- Clicking a text link once will take you to the folder or viewer below.
- Double-clicking an entire row will take you to the folder or viewer below.
- The cursor becomes a finger symbol

No9

- Improved mouse operation.

Example: Folder/file list (panel display)

20250527 (工事) dev

メンバー(2) 通知 設定 ...

ファイル 掲示板 カレンダー

× 2件を選択中です

ファイルおよびフォルダを検索

名前

20250527

2025/05/19、更新者: fileman...

M0001_02.JPG

2025/05/15、更新者: fileman...

M0001_03.JPG

2025/05/15、更新者: fileman...

M0002_02.JPG

2025/05/15、更新者: fileman...

- Multiple selection possible using checkboxes
- Single-clicking on a card will take you to the folder or viewer underneath
- The cursor becomes a finger symbol

No9

- Improved mouse operation.

Example: Modal related (related)

場所:

ファイル管理デモ企業

▼

20250527 (工事) dev (...

▼

×

2件のファイルを選択中

← 20250527 (工事) dev

"20250527 (工事) dev" 内を検索

名前

▼

☐  M0001_02.JPG

☒  M0001_03.JPG

☒  [M0002_02.JPG](#)

☐  M0002_02.JPG

☐  M0003_01.PDF

• Multiple selection possible using checkboxes

• Single click on an entire row to select it

• Clicking a text link once will take you to the folder below.

• The cursor becomes a finger symbol

< 1 / 1 >

キャンセル

関連ファイルに追加

Example: Modal related (movement)

移動先:

ファイル管理デモ企業

▼

20250527 (工事) dev

▼

×

← 20250527 (工事) dev

"20250527 (工事) dev" 内を検索

 [20250527](#) >

• Text link, single click on the entire line to jump to the folder below

• The cursor becomes a finger symbol

 M0002_02.JPG

 M0002_03.JPG

 M0003_01.PDF

 M0003_02.JPG

新規フォルダ

キャンセル

移動

No9

- Improved mouse operation.

Example: Site list (list view)

現場						
すべての企業 ▼ 現場を検索 🔍						
ステータス: <input checked="" type="checkbox"/> 未着手 <input checked="" type="checkbox"/> 進行中 <input checked="" type="checkbox"/> 完了						
+ 新規						
☰ ☒						
名前	ステータス	メンバー	ファイル数	保存容量		
◎ ファイル管理デモ現場006	▶ 進行中	49	494	102.4GB	...	
◎ ファイル管理V2'テスト現場（受け入れ）	1 ▶ 進行中	22	218	3.7GB	...	
◎ 性能確認用_D ★	▶ 進行中	8	155	3GB	...	
◎ Sprint04確認用	▶ 進行中	15	22	8.9MB	...	
◎ Sprint06確認用	▶ 進行中	18	1109	1.3GB	...	
◎ 0716 リハ確認用	2 ▶ 進行中	3	1065	35.4GB	...	
◎ Sprint07確認用	1 ▶ 進行中	5	3	389.5KB	...	
◎ 0716 リハ確認用	▶ 進行中	2	1257	13.1GB	...	
◎ Sprint07確認用	▶ 進行中	2	3	1.7GB	...	
◎ 西村さん確認用	▶ 進行中	14	25	1.7GB	...	
◎ Sprint09確認用_修正後	▶ 進行中	2	4	91.6KB	...	
◎ ファイル管理システム ★	▶ 進行中	7	1308	25.4GB	...	
◎ ファイル管理システム ★	▶ 進行中	6	1274	13.3GB	...	

- Single click on the entire row to transition to the site
- Option area is hidden
- The cursor becomes a finger symbol

No10

- Member-related features have been improved.

Folder/File List

20250527 (工事) dev

ファイル 掲示板 カレンダー 発議書類 電子納品

1件を選択中です

ファイルおよびフォルダを検索

名前
<input checked="" type="checkbox"/> M0001_02.JPG
<input type="checkbox"/> M0001_03.JPG
<input type="checkbox"/> M0002_02.JPG
<input type="checkbox"/> M0002_03.JPG
<input type="checkbox"/> M0003_01.PDF
<input type="checkbox"/> M0003_02.JPG
<input type="checkbox"/> M0004_01.PDF
<input type="checkbox"/> M0004_02.JPG
<input type="checkbox"/> M0004_03.JPG
<input type="checkbox"/> testfile1
<input type="checkbox"/> 工事書類
<input type="checkbox"/> Groupware

20250527 (工事) devのメンバー(2)

ユーザーを検索

+ 追加

権限を管理

- filemanager_v2_test SuperAdmin001
ファイル管理デモ企業
SuperAdmin | 現場監督 | 総括監督員
- filemanager_v2_test support
ファイル管理デモ企業
SuperAdmin | 現場監督 | 主任監督員

1

M0001_02.JPG

メンバー(2)

詳細 関連ファイル

Hide Members tab

最終更新者	サイズ
filemanager_v2_test SuperAdmin001	10.5MB
filemanager_v2_test SuperAdmin001	10.5MB
filemanager_v2_test SuperAdmin001	10.5MB
filemanager_v2_test SuperAdmin001	10.5MB
filemanager_v2_test SuperAdmin001	10.5MB
filemanager_v2_test SuperAdmin001	133.7KB
filemanager_v2_test SuperAdmin001	10.5MB
filemanager_v2_test SuperAdmin001	135.2KB
filemanager_v2_test SuperAdmin001	10.5MB
filemanager_v2_test SuperAdmin001	10.5MB
filemanager_v2_test SuperAdmin001	2.4GB
filemanager_v2_test SuperAdmin001	-
filemanager_v2_test SuperAdmin001	-

作成 2025/05/15 09:55
作成者 filemanager_v2_test SuperAdmi...
最終更新 2025/05/15 09:55
更新者 filemanager_v2_test SuperAdmi...

• New member modal functionality implemented

No10

- Member-related features have been improved.

Site / Group List

現場

すべての企業

現場を検索

+

新規

ステータス：☒ 未着手 ☒ 進行中 ☒ 完了

Option area is hidden

<div><div>進行中 限</div><div>20250318 (工事) dev2</div><div><div>メンバー</div>2<div>ファイル</div>11<div>保存容量</div>164.1MB</div><div><div></div><div></div><div></div><div></div><div></div></div></div>	<div><div>進行中 限</div><div>20250318 (業務) dev2</div><div><div>メンバー</div>1<div>ファイル</div>0<div>保存容量</div>0byte</div><div><div></div><div></div><div></div><div></div><div></div></div></div>	<div><div>進行中 限</div><div>20250318 (工事) dev</div><div><div>メンバー</div>1<div>ファイル</div>139<div>保存容量</div>1.6GB</div><div><div></div><div></div><div></div><div></div><div></div></div></div>	<div><div>進行中 限</div><div>20250318 (業務) dev</div><div><div>メンバー</div>1<div>ファイル</div>7<div>保存容量</div>52.9MB</div><div><div></div><div></div><div></div><div></div><div></div></div></div>	<div><div>進行中 限</div><div>20250318 (工事) staging</div><div><div>メンバー</div>4<div>ファイル</div>154<div>保存容量</div>934.5MB</div><div><div></div><div></div><div></div><div></div><div></div></div></div>	<div><div>進行中 限</div><div>20250318 (業務) staging</div><div><div>メンバー</div>3<div>ファイル</div>63<div>保存容量</div>414.7MB</div><div><div></div><div></div><div></div><div></div><div></div></div></div>	<div><div>進行中 限</div><div>test-delete</div><div><div>メンバー</div>1<div>ファイル</div>0<div>保存容量</div>0byte</div><div><div></div><div></div><div></div><div></div><div></div></div></div>	<div><div>進行中 限</div><div>20250408 (工事) dev2</div><div><div>メンバー</div>1<div>ファイル</div>44<div>保存容量</div>1GB</div><div><div></div><div></div><div></div><div></div><div></div></div></div>	<div><div>進行中 限</div><div>matsumoto_TEST 1 2 1 2</div><div><div>メンバー</div>1<div>ファイル</div>0<div>保存容量</div>0byte</div><div><div></div><div></div><div></div><div></div><div></div></div></div>
<div><div>進行中 限</div><div>20250408_発議データ更...</div><div><div>メンバー</div>2<div>ファイル</div>14<div>保存容量</div>223.9MB</div><div><div></div><div></div><div></div><div></div><div></div></div></div>	<div><div>進行中 限</div><div>20250408_発議データ更...</div><div><div>メンバー</div>2<div>ファイル</div>0<div>保存容量</div>0byte</div><div><div></div><div></div><div></div><div></div><div></div></div></div>	<div><div>進行中 限</div><div>20250408_発議データ更...</div><div><div>メンバー</div>1<div>ファイル</div>14<div>保存容量</div>23.4MB</div><div><div></div><div></div><div></div><div></div><div></div></div></div>	<div><div>進行中 限</div><div>20250408 (工事) staging</div><div><div>メンバー</div>1<div>ファイル</div>63<div>保存容量</div>1.6GB</div><div><div></div><div></div><div></div><div></div><div></div></div></div>	<div><div>進行中 限</div><div>20250408 (業務) staging</div><div><div>メンバー</div>1<div>ファイル</div>49<div>保存容量</div>588.6MB</div><div><div></div><div></div><div></div><div></div><div></div></div></div>	<div><div>進行中 限</div><div>20250408 (工事) dev2_3</div><div><div>メンバー</div>2<div>ファイル</div>6<div>保存容量</div>221.9MB</div><div><div></div><div></div><div></div><div></div><div></div></div></div>	<div><div>進行中 限</div><div>20250408 (工事) stagi...</div><div><div>メンバー</div>2<div>ファイル</div>4<div>保存容量</div>111.3MB</div><div><div></div><div></div><div></div><div></div><div></div></div></div>	<div><div>進行中 限</div><div>20250408 (業務) stagi...</div><div><div>メンバー</div>2<div>ファイル</div>4<div>保存容量</div>160MB</div><div><div></div><div></div><div></div><div></div><div></div></div></div>	<div><div>進行中 限</div><div>20250408 (工事) stagi...</div><div><div>メンバー</div>2<div>ファイル</div>10<div>保存容量</div>262MB</div><div><div></div><div></div><div></div><div></div><div></div></div></div>
<div><div>進行中 限</div><div>20250508 (工事) dev2</div><div><div>メンバー</div>5<div>ファイル</div>24<div>保存容量</div>804.7MB</div><div><div></div><div></div><div></div><div></div><div></div></div></div>	<div><div>進行中 限</div><div>20250508 (工事) dev2...</div><div><div>メンバー</div>2<div>ファイル</div>0<div>保存容量</div>0byte</div><div><div></div><div></div><div></div><div></div><div></div></div></div>	<div><div>進行中 限</div><div>20250508 (工事) dev</div><div><div>メンバー</div>3<div>ファイル</div>4<div>保存容量</div>221.5MB</div><div><div></div><div></div><div></div><div></div><div></div></div></div>	<div><div>進行中 限</div><div>20250508 (工事) dev2_1</div><div><div>メンバー</div>2<div>ファイル</div>7<div>保存容量</div>232.3MB</div><div><div></div><div></div><div></div><div></div><div></div></div></div>	<div><div>進行中 限</div><div>権限無し</div><div><div>メンバー</div>2<div>ファイル</div>3<div>保存容量</div>50GB</div><div><div></div><div></div><div></div><div></div><div></div></div></div>	<div><div>進行中 限</div><div>20250527 (工事) dev</div><div><div>メンバー</div>2<div>ファイル</div>16<div>保存容量</div>2.6GB</div><div><div></div><div></div><div></div><div></div><div></div></div></div>			

151-174件表示 (全174件) < 1 2 3 4 >

No10

- Member-related features have been improved.

On-site setup

権限無しの設定

- Clicking the link will take you to the site
- Member role permissions are hidden if no license is applied

メンバー

名前検索 🔍

名前	所属企業	管理種別 ①	現場権限 ①	
 filemanager_v2_test SuperAdmin001	ファイル管理デモ企業	SuperAdmin	現場監督	▼ ...
 filemanager_v2_test SuperAdmin002	ファイル管理デモ企業	Staff	作業員(一般)	▼ ...

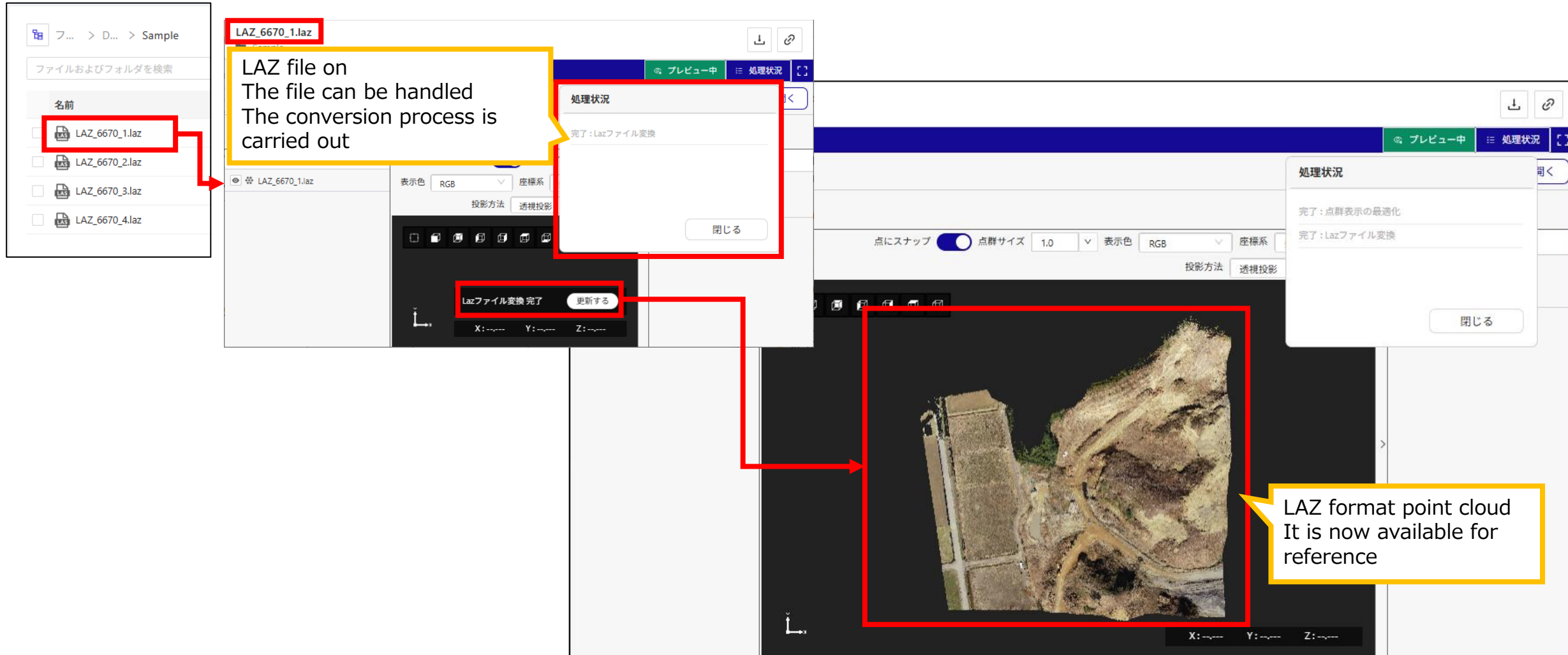
1-2件表示 (全2件) < 1 >

- If the license is not applied, the left menu is not displayed.

No.12

It is now possible to reference point clouds in

* When displaying point cloud (LAZ) from Smart Construction Groupware



The screenshot illustrates the workflow for loading a LAZ point cloud file into the Smart Construction Groupware. On the left, a file browser shows a list of files, with 'LAZ_6670_1.laz' highlighted. A red arrow points from this file to the main interface. In the center, a '処理状況' (Processing Status) dialog box indicates '完了: Lazファイル変換' (Completed: LAZ file conversion). Below this, a status bar shows 'Lazファイル変換 完了' (LAZ file conversion completed) and an '更新する' (Update) button. A red arrow points from the '更新する' button to the main 3D view. The 3D view on the right displays the loaded point cloud data as a textured terrain model. A yellow callout box points to the 3D view, stating: 'LAZ format point cloud It is now available for reference'. Another yellow callout box points to the '処理状況' dialog, stating: 'LAZ file on The file can be handled The conversion process is carried out'.

LAZ file on
The file can be handled
The conversion process is carried out

処理状況
完了: Lazファイル変換

完了: Lazファイル変換

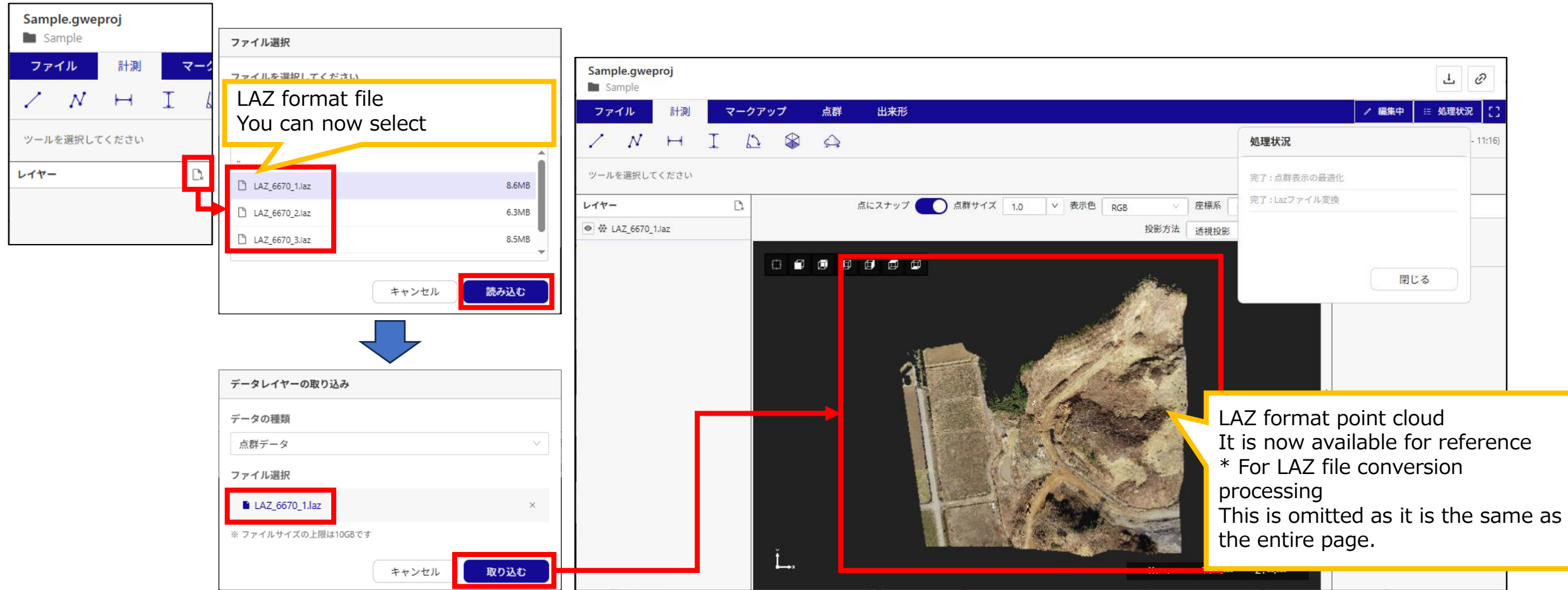
完了: 点群表示の最適化
完了: Lazファイル変換

LAZ format point cloud
It is now available for reference

No.12

It is now possible to reference point clouds in

* When adding point clouds (LAZ) to a project file

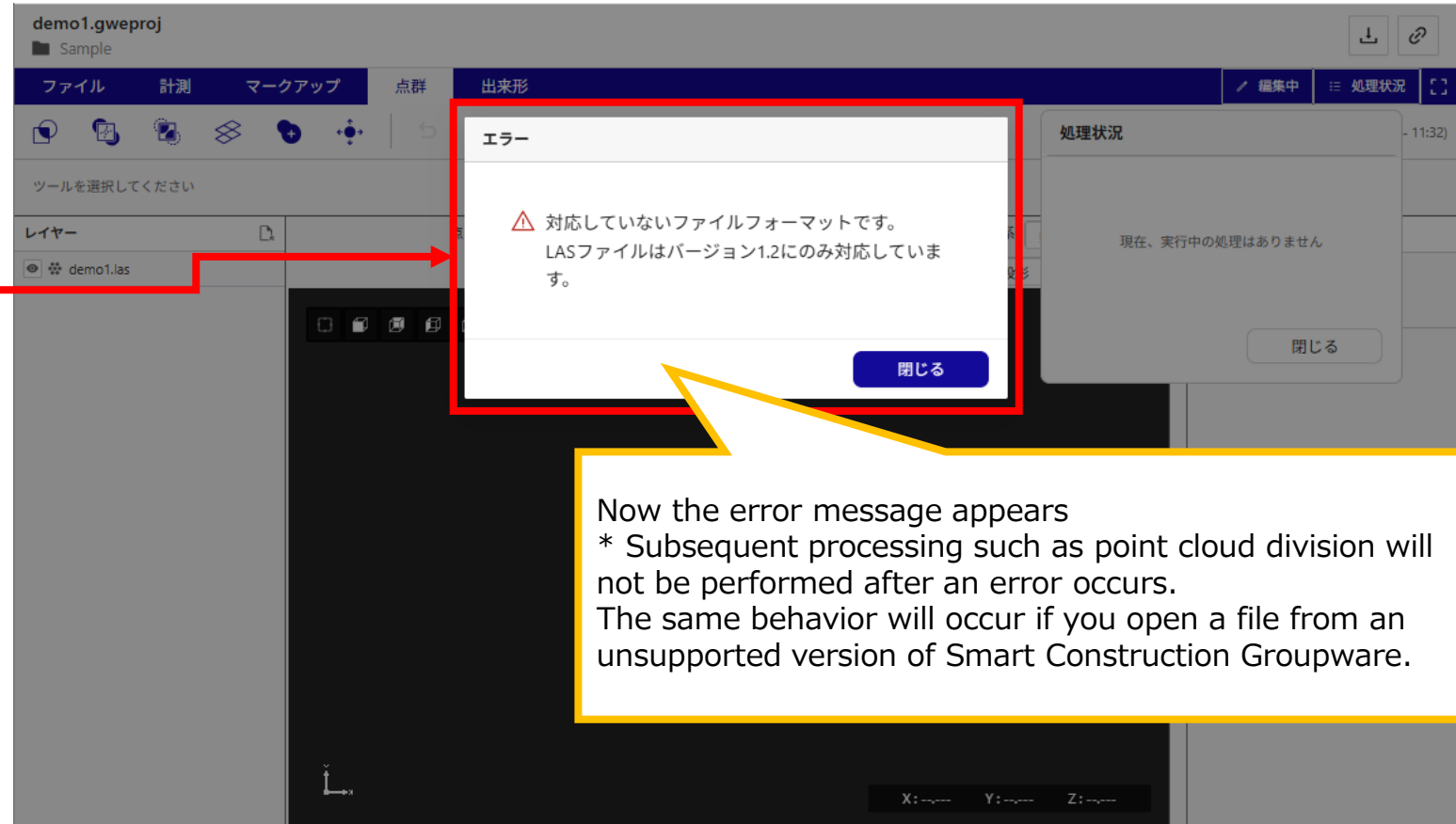
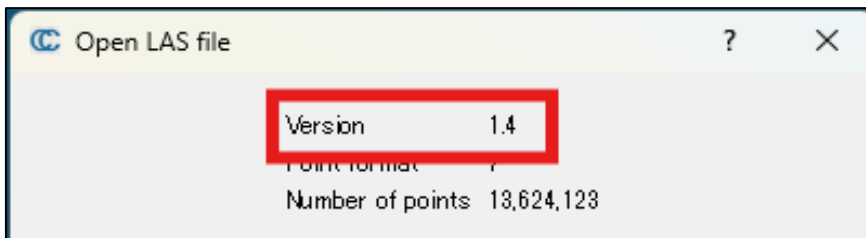


The screenshot illustrates the workflow for adding a LAZ point cloud file to a project in Earth Brain. The interface is divided into several panels:

- Top Left Panel (Sample.gweproj):** Contains tabs for 'ファイル' (File), '計測' (Measurement), and 'マークアップ' (Markup). A red box highlights the 'ファイル' tab, and a red arrow points to the 'レイヤー' (Layer) section.
- File Selection Dialog (ファイル選択):** A yellow box highlights the text 'LAZ format file You can now select'. A red box highlights the list of files: 'LAZ_6670_1.laz' (8.6MB), 'LAZ_6670_2.laz' (6.3MB), and 'LAZ_6670_3.laz' (8.5MB). A red box highlights the '読み込む' (Load) button.
- Data Layer Import Dialog (データレイヤーの取り込み):** A blue arrow points from the '読み込む' button to this dialog. It shows '点群データ' (Point Cloud Data) selected under 'データの種類' (Data Type). Under 'ファイル選択' (File Selection), 'LAZ_6670_1.laz' is selected. A red box highlights the '取り込む' (Import) button.
- Main Project View (Sample.gweproj):** The 'レイヤー' (Layer) panel shows 'LAZ_6670_1.laz' loaded. The main view displays a 3D point cloud of a landscape. A red box highlights the point cloud, and a red arrow points from the '取り込む' button to it.
- Processing Status Dialog (処理状況):** A yellow box highlights the text 'LAZ format point cloud It is now available for reference * For LAZ file conversion processing This is omitted as it is the same as the entire page.' The dialog shows '完了: 点群表示の最適化' (Completed: Point cloud display optimization) and '完了: Lazファイル変換' (Completed: Laz file conversion). A red box highlights the '閉じる' (Close) button.




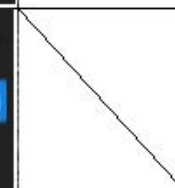
No.15

An error message will now be displayed when loading an



No.16

The measurement UI has been changed.
The changed UI will look like this:

	マークアップテキスト	マークアップエリア	マークアップ線	2点間距離 (複数)	水平距離	高低差	面積体積計測	角度計測
作成中								
作成完了								
Hover								
選択時								
編集時								

