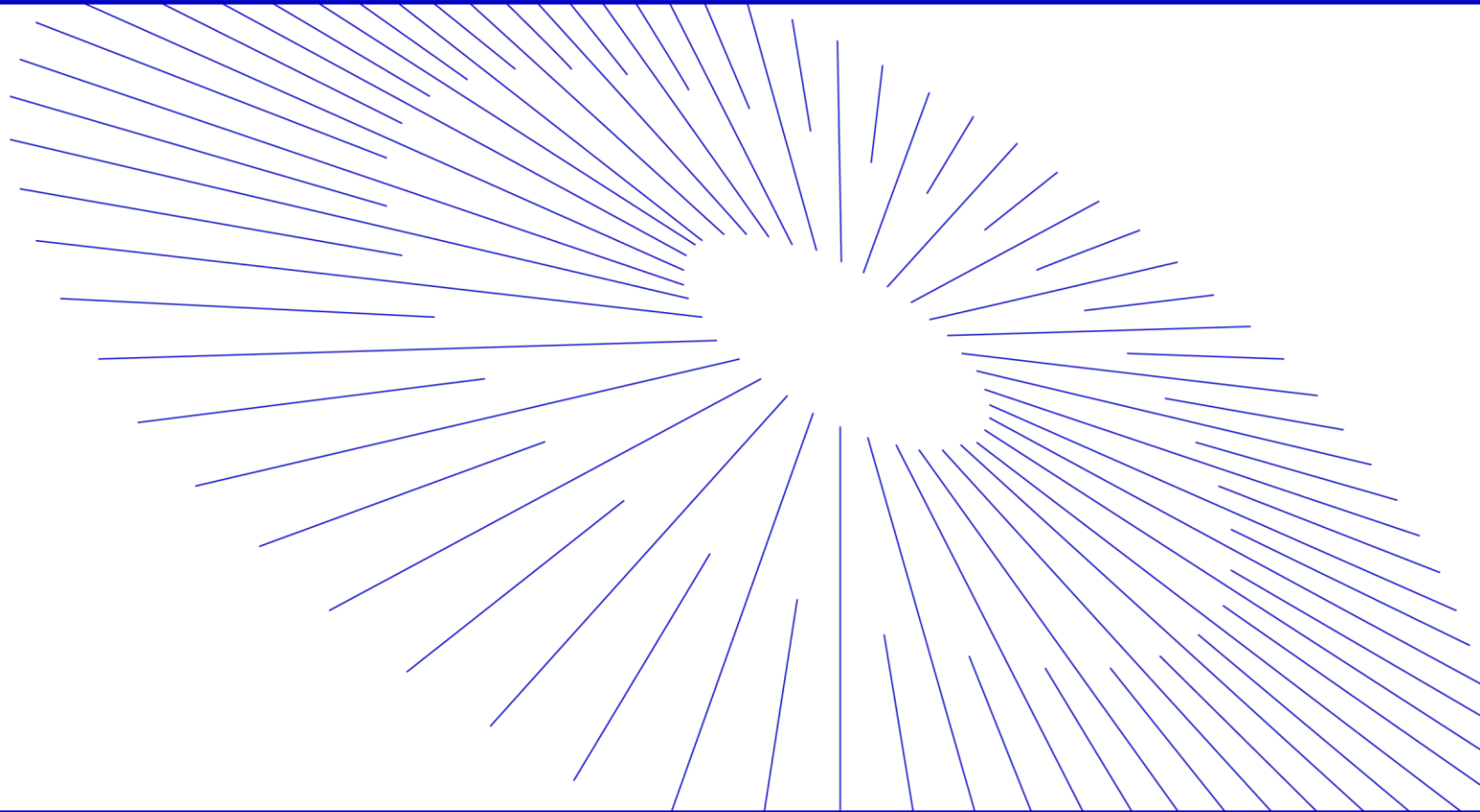


Smart Construction Groupware Release information 9.10.2024



EARTHBRAIN

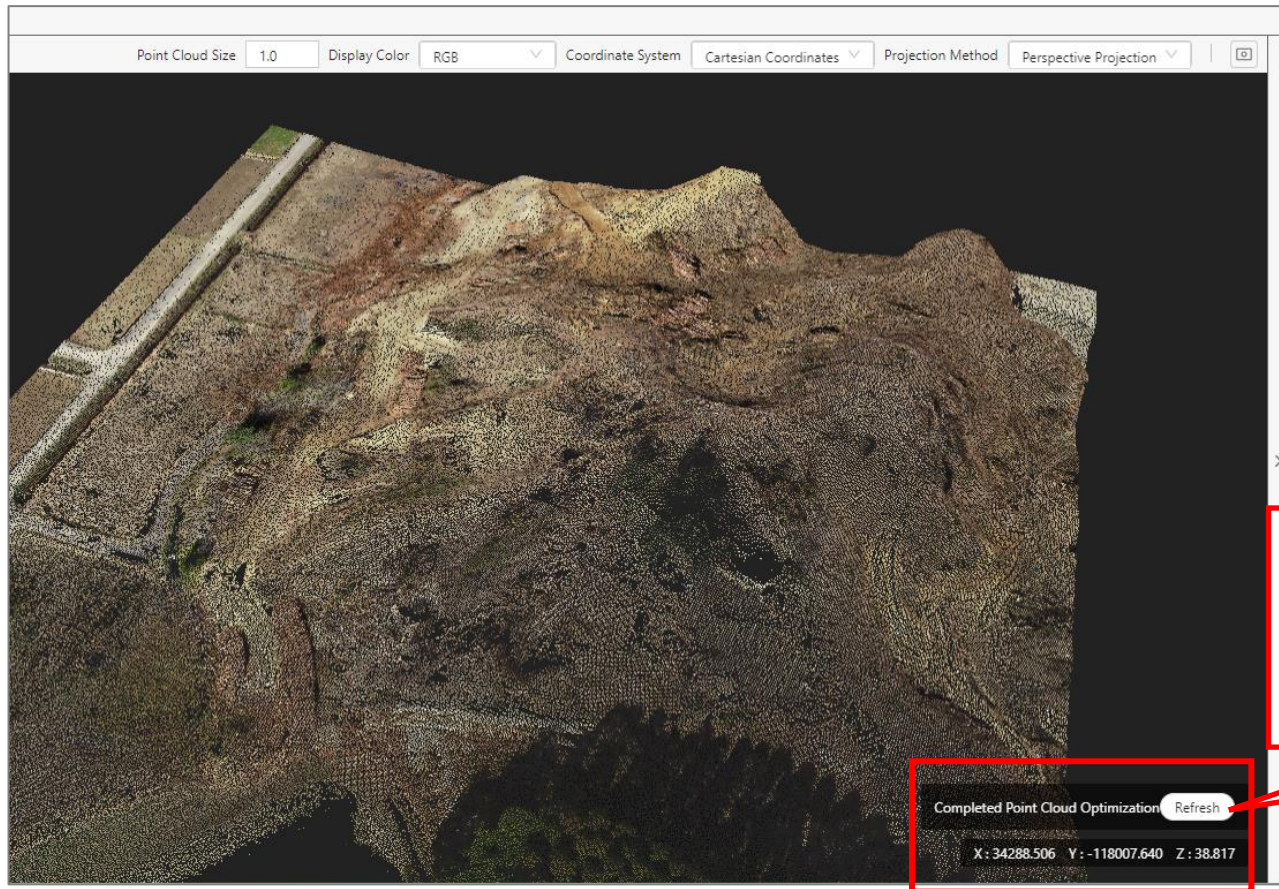
- We will release these contents on the following schedule

Release Schedule : JST 8th, Oct (expected) 19:00~23:00
(During releasing, temporally can not access the application)

NO.	Functions	Summary	Details
1	Groupware viewer	New feature added An "Open from Project File" button has been added to the viewer screen.	* This function is a button to use the point cloud editing function that will be provided in the future. Currently, we do not provide a point cloud editing function, so please wait for a while until the actual function is provided.
2	Groupware viewer	New feature added The processing completion notification function has been added.	Please refer to the explanation on the following page.
3	P21/SFC viewer	New feature added P21/SFC files can now be opened in a viewer.	Please refer to the explanation on the following page.

No.2

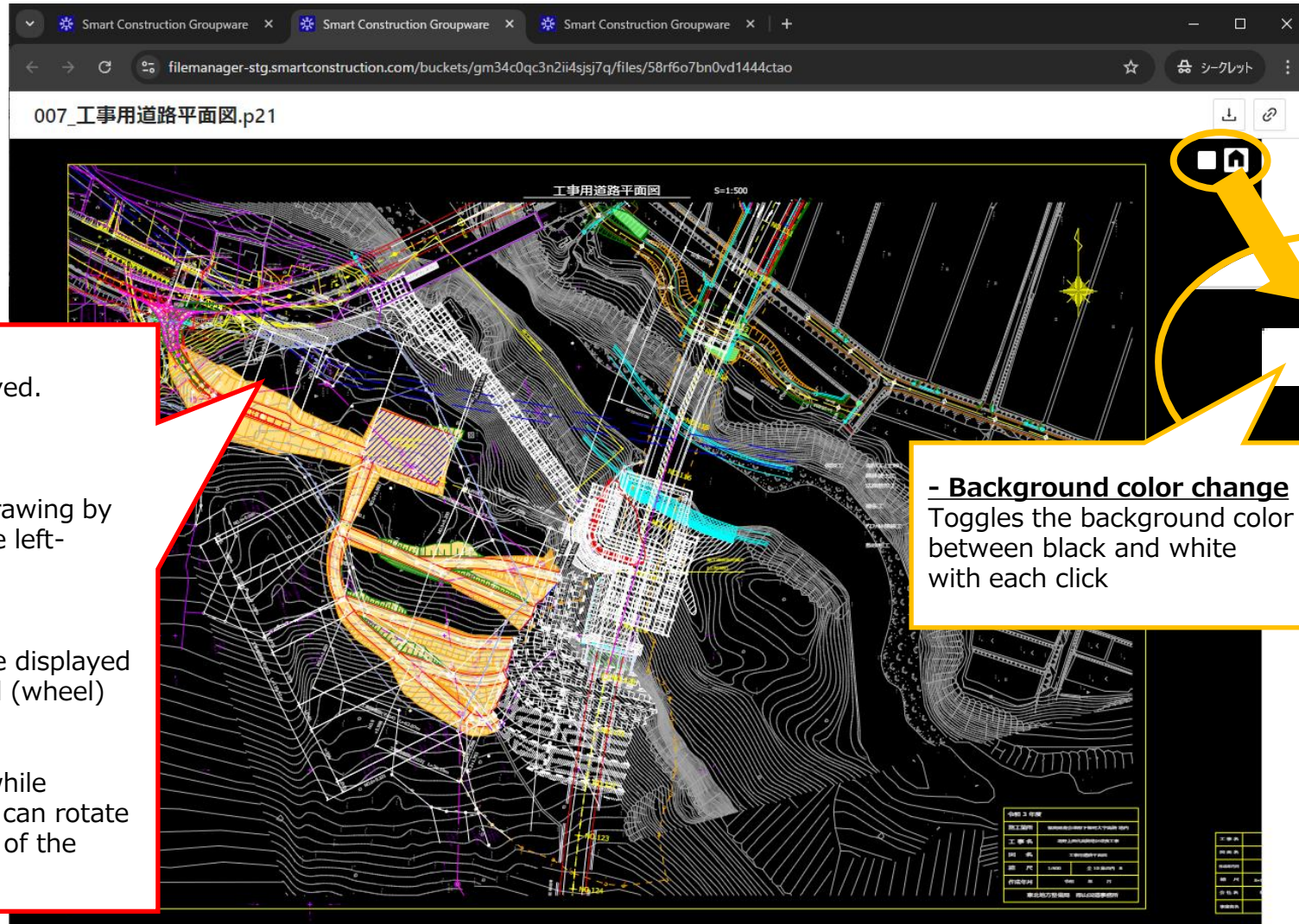
You will now be notified when the display optimization process of the point cloud file is completed. Once the display optimization process is complete, you can manipulate the point cloud data more smoothly.



• **Notification of completion of processing**
 When the optimization process of the point cloud display is completed, a notification will be sent to the lower right corner of the viewport. Click "Refresh" to refresh the point cloud. Even if you do not update, you can continue to operate.

No.3

"P21/SFC Viewer" has been added to refer to drawing files (P21, SFC).



• Viewport area

The selected drawing is displayed.
You can do the following:

① Move

You can move the displayed drawing by moving the mouse cursor while left-clicking

② Zoom in/out

You can zoom in and out of the displayed drawing by operating the scroll (wheel)

③ Rotate

By moving the mouse cursor while clicking the scroll (wheel), you can rotate the drawing around the center of the display area.

- Background color change

Toggles the background color between black and white with each click

• Home icon

Displays the drawing in a positive position in the center of the screen at the initial display size

